

**A IQ3500V**  
 COOLING CAPACITY: 3500 BTUH (1026W) @131°F (55°C)  
 MAXIMUM AMPS: 2.4 (1152W) @480V 60HZ  
 MAXIMUM OPERATING TEMP: 131°F (55°C)  
 MINIMUM OPERATING TEMP: -4°F (-20°C)  
 DIMENSIONS: 32.53" (826MM) H X 19.31" (490MM) W X 6.41" (163MM) D  
 WEIGHT: 119 LBS (54.1KG)

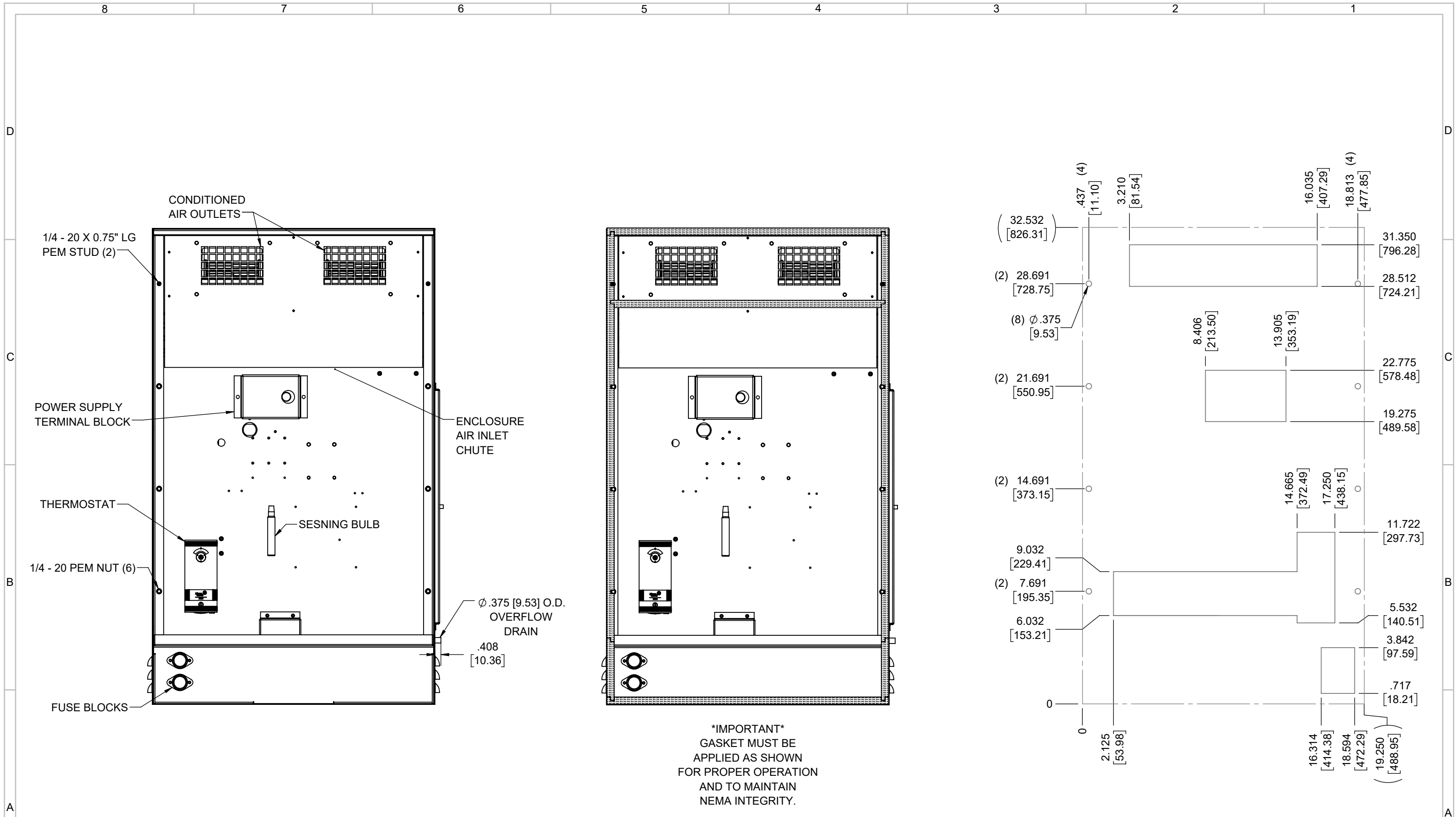
REV	REVISION	CHG	DATE	APP	DATE	CN #
D	CHANGED THERMOSTAT DIMENSIONS	NAT	2/15/2021			EC-1434
C	ADDED CFM, dBA, AND CLEARANCE INFO	RCC	3/29/2018			1351
B	ADDED WATTAGE INFO	RCC	1/3/2018			
A	REDRAWN IN SW	RCC	4/13/2017			

ITEM NUMBER	N/A
MATERIAL	N/A
EST WT:	lbs
DRAWN BY	RCC
DATE	4/13/2017
SCALE	1:8

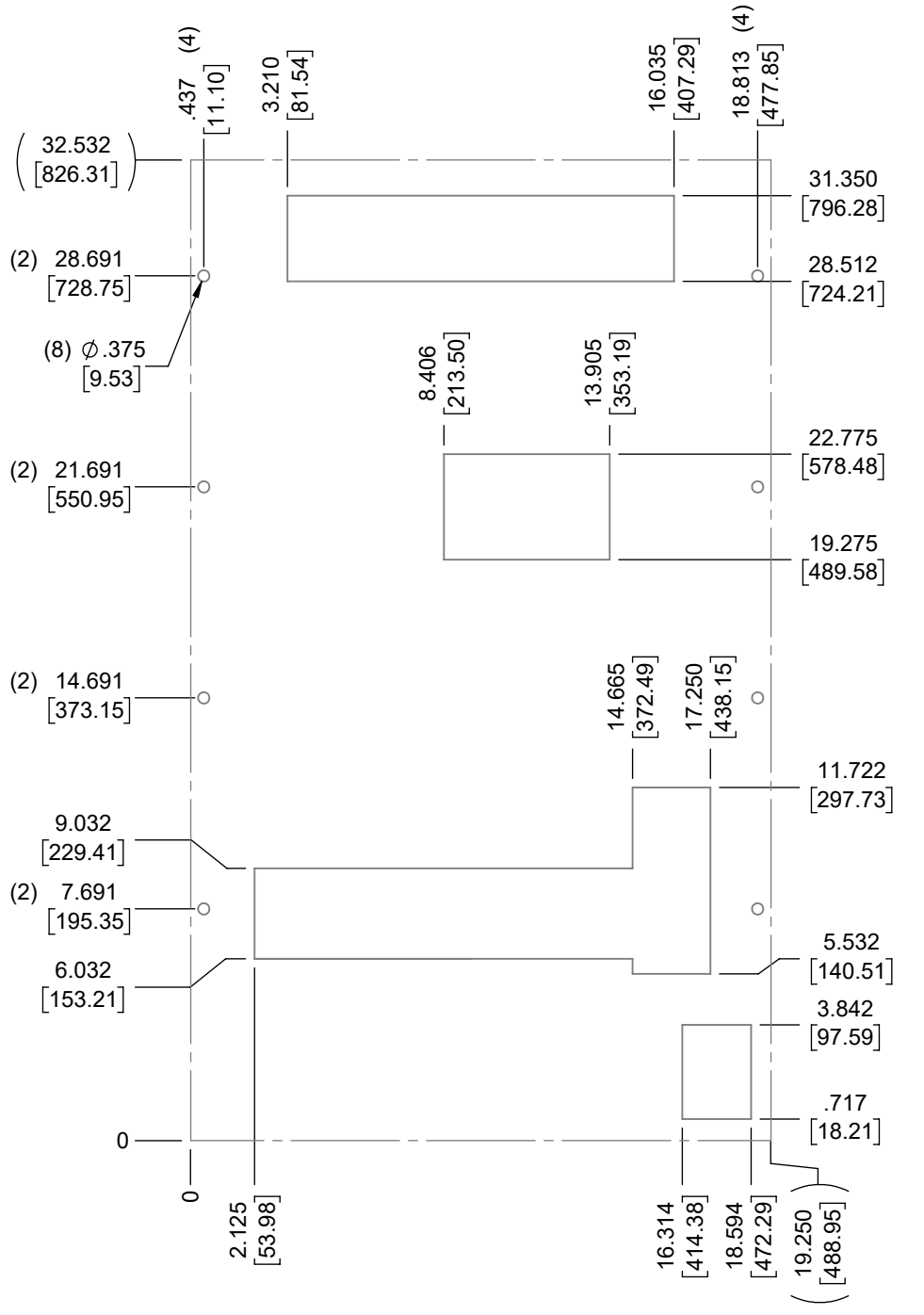
USED ON	IQ3500V
UNLESS OTHERWISE SPECIFIED TOLERANCES	
.X	±.060
.XX	±.030
.XXX	±.015
FRACTIONAL	±1/16
ANGULAR	±1/2°
SURFACE FINISH	63

DO NOT SCALE DRAWING  
 DIMENSIONS ARE INCHES

**ICE QUBE, INC.**  
THIS IS A PROPRIETARY DOCUMENT. DO NOT REPRODUCE OR DISCLOSE WITHOUT THE EXPRESS WRITTEN PERMISSION OF ICE QUBE, INC.  
 DESCRIPTION  
**IQ3500V SPEC DRAWING, 480V XP2**  
 DRAWING NUMBER  
**IQ351427**  
 REV  
**D**



**\*IMPORTANT\***  
 GASKET MUST BE  
 APPLIED AS SHOWN  
 FOR PROPER OPERATION  
 AND TO MAINTAIN  
 NEMA INTEGRITY.



EVAP. OUTLET ≈ 236 CFM  
 COND. OUTLET ≈ 236 CFM  
 SOUND LEVEL @5FT FROM UNIT @ A HT. OF 3FT = 55 dBA  
 SOUND LEVEL @2FT FROM UNIT @ A HT. OF 5FT = 55 dBA  
 CONDENSER INLET MIN. CLEARANCE 2.04"

ITEM NUMBER <i>N/A</i>	USED ON <i>IQ3500V</i>	UNLESS OTHERWISE SPECIFIED TOLERANCES X ±.060 .XX ±.030 .XXX ±.015 FRACTIONAL ±1/4 ANGULAR ±1/2°	 <small>THIS IS A PROPRIETARY DOCUMENT. DO NOT REPRODUCE OR DISCLOSE WITHOUT THE EXPRESS WRITTEN PERMISSION OF ICE QUBE, INC.</small> DESCRIPTION <b>IQ3500V SPEC DRAWING, 480V XP2</b> DRAWING NUMBER <b>IQ351427</b>	REV <i>D</i>
MATERIAL <i>N/A</i>	EST WT: lbs	SURFACE FINISH 63		DO NOT SCALE DRAWING DIMENSIONS ARE INCHES
DRAWN BY <i>RCC</i>	DATE <i>4/13/2017</i>	SCALE <i>1:6</i>		